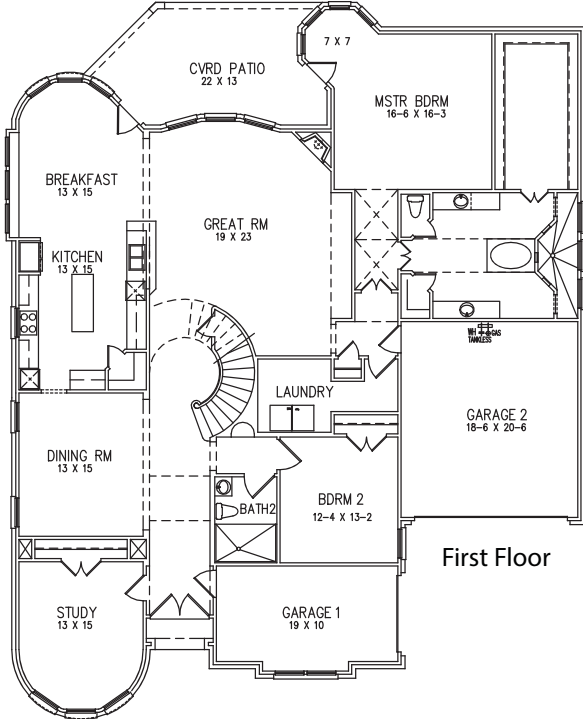


SOMERSET - PHASE I

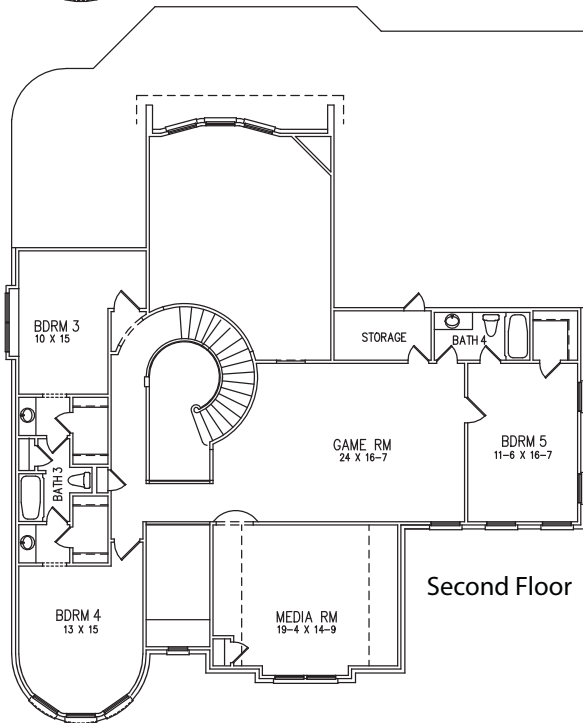


The Adison Quick Move-In

\$523,203
3504 Lakemont Dr.
Mansfield, TX
76063



First Floor



Second Floor

This exquisite floor plan in our Somerset community is perfect for your growing family and is Move-In-Ready! This home includes a 3 Car Garage and a beautiful covered patio for outdoor entertaining. You and your guests will be wowed by the dramatic two-story Entryway and curved Iron Staircase. The Study will make a lovely home office. There is a private Bedroom and Bath on the first floor that makes an extraordinary private guest retreat. The Master Suite offers a relaxing sitting area along with a retreat-like Master Bathroom with large walk-in shower and spacious Master Closet. Upstairs are 3 oversized Bedrooms and 2 full Bathrooms to accommodate all of your family needs. Many hours can be spent enjoying fun with family and friends in the Game Room and Media Room.

- 4,780 Sq Ft**
- Custom Site-Finish Cabinets**
- 5 / 4 / 3**
- Granite Kitchen Countertops**
- 3 Car Garage**
- Stainless Steel Appliances with Double Oven**
- Stone Elevation**
- 2" Blinds**
- Double Front Doors**
- Energy Efficient 16 Seer Rated HVAC**
- Covered Patio**
- Energy Efficient Tankless Water Heater**
- And much more!**

For more information, call your Listing Agent
Christina Kang, CENTURY 21 Judge Fite Co., 817.739.7433
Christina@DreamHomeDFW.com

www.InnovationBuilders.com

Price refers to the lowest base price and does not include any options that may be shown. Price, floor plans, elevations and features will vary based on location of community. Pricing and plans are subject to change at any time. Actual square footage and dimensions will vary. 08/27/2018

