

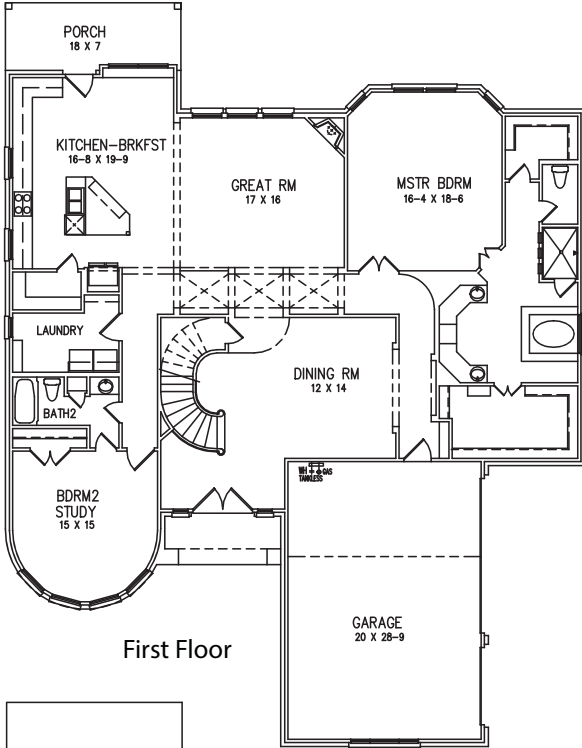
# SOMERSET - PHASE I



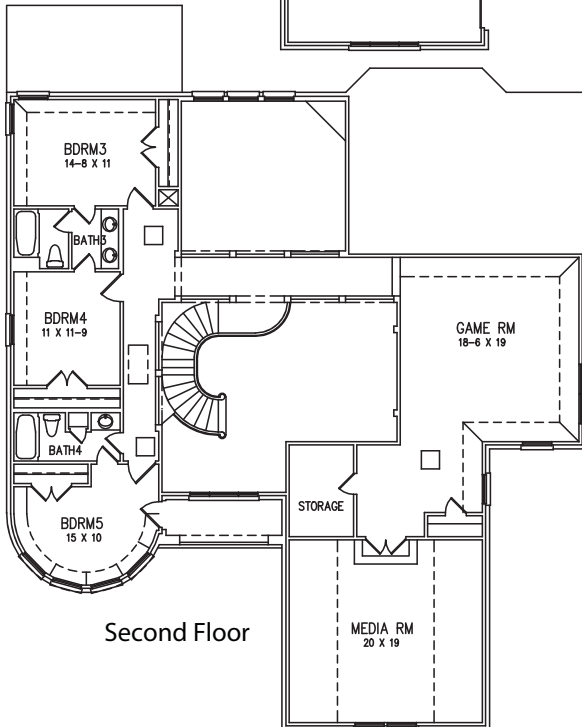
## The Annette Quick Move-In



**\$534,226**  
3604 Lakemont Dr.  
Mansfield, TX  
76063



First Floor



Second Floor

This exquisite floor plan in our Somerset community is not only perfect for your growing family, but will be Move-In Ready early Summer 2018! As you enter through the double front doors to your formal Dining Room, it leads you to the open Living Room and Kitchen which are great for entertaining. The 2nd Bedroom and Bath is a lovely retreat for your guests or to use as a private Study. The luxurious Master Suite offers a lavish Master Bath, perfect for relaxing your cares away with his and hers Closets. The spiral staircase leads upstairs to Bedrooms 3, 4 and 5 with 2 full Baths to accommodate all your needs. Many hours can be spent enjoying fun with family and friends in the Game Room and Media Room.

- 4,630 Sq Ft**
- 5 / 4 / 3**
- 3 Car Garage**
- Stone Elevation**
- Double Front Doors**
- Covered Balcony**
- And much more!**
- Custom Site-Finish Cabinets**
- Stainless Steel Appliances**
- Granite Kitchen Countertops**
- Energy Efficient 16 Seer Rated HVAC**
- Energy Efficient Tankless Water Heater**

For more information, call your Listing Agent  
Curtis Abernathy, CENTURY 21 Judge Fite Co., 682.999.8191  
CurtisAbernathy@judgefite.com

[www.InnovationBuilders.com](http://www.InnovationBuilders.com)

Price refers to the lowest base price and does not include any options that may be shown. Price, floor plans, elevations and features will vary based on location of community. Pricing and plans are subject to change at any time. Actual square footage and dimensions will vary. 12/28/2018

