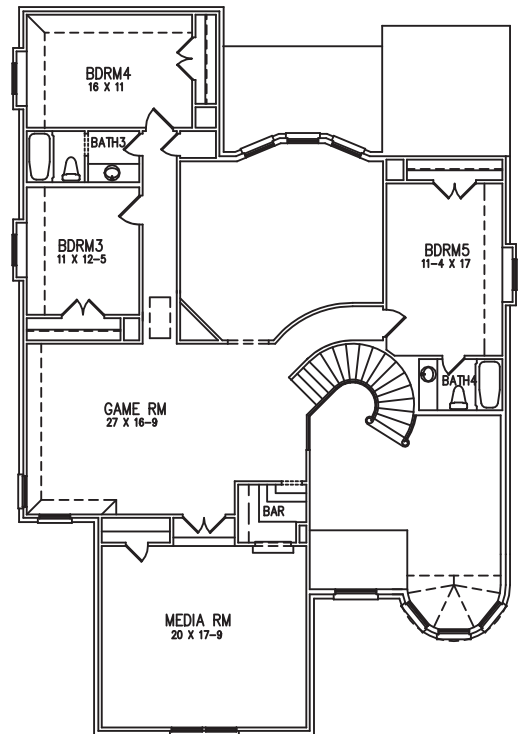
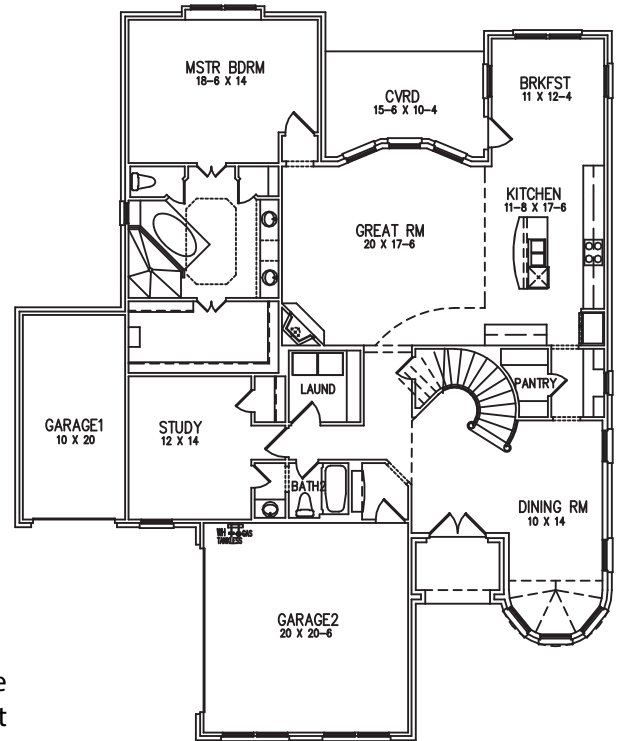


SECLUSION RIDGE

\$615,434
7307 Hidden Way
Arlington, TX
76001

**The Cory
Immediate Move-In !!**



This stunning 4200 square foot 5 Bedroom home with 3-car Garage is available for immediate Move-In!! As you enter through the front doors to your formal Dining Room and Sitting Area, it leads you to the open Kitchen, Breakfast Area, and Great Room. The quaint Covered Patio off the Great Room is perfect for entertaining. The luxurious Master Retreat offers a generous sized walk-in closet and oversized walk-in shower perfect for relaxing the day away. The spiral staircase leads upstairs to Bedrooms 3 and 4 with a Bath plus Bedroom 5 with a private full Bath. Your family and friends will enjoy countless hours of fun while enjoying the Game Room and Media Room. Bedroom 2 on the first floor can also serve as a lovely Study or Home Office.

-  **4,200 Sq Ft**
-  **5 / 4 / 3**
-  **Double Front Doors**
-  **Game Room and Media Room**
-  **Wet Bar**
-  **Oil Rubbed Bronze fixtures**
-  **Custom Site Finish Cabinets**
-  **Stainless Steel Appliances with Double Oven and 36" Cooktop**
-  **Upgraded Kitchen Countertops**
-  **Upgraded Stone elevation design**
-  **Blinds**
-  **And much more!**



For more information, call your Listing Agent
Curtis Abernathy, CENTURY 21 Judge Fite Co., 682.999.8191
CurtisAbernathy@judgefite.com

www.InnovationBuilders.com

Price refers to the lowest base price and does not include any options that may be shown. Price, floor plans, elevations and features will vary based on location of community. Pricing and plans are subject to change at any time. Actual square footage and dimensions will vary. 12/28/2018

