

# COUNTRY LAKES - PHASE 2



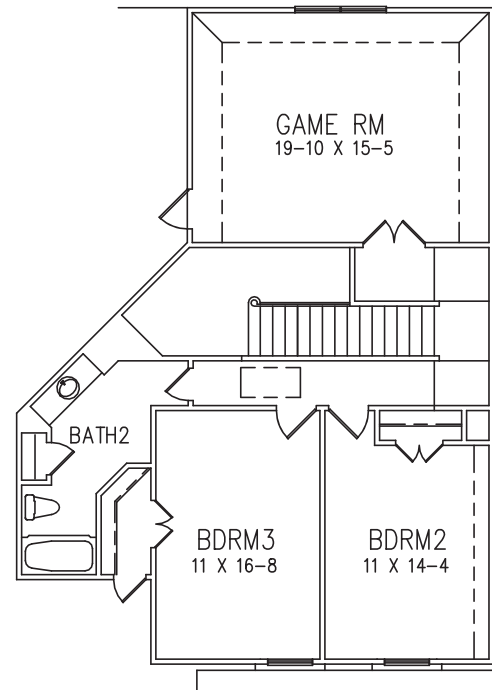
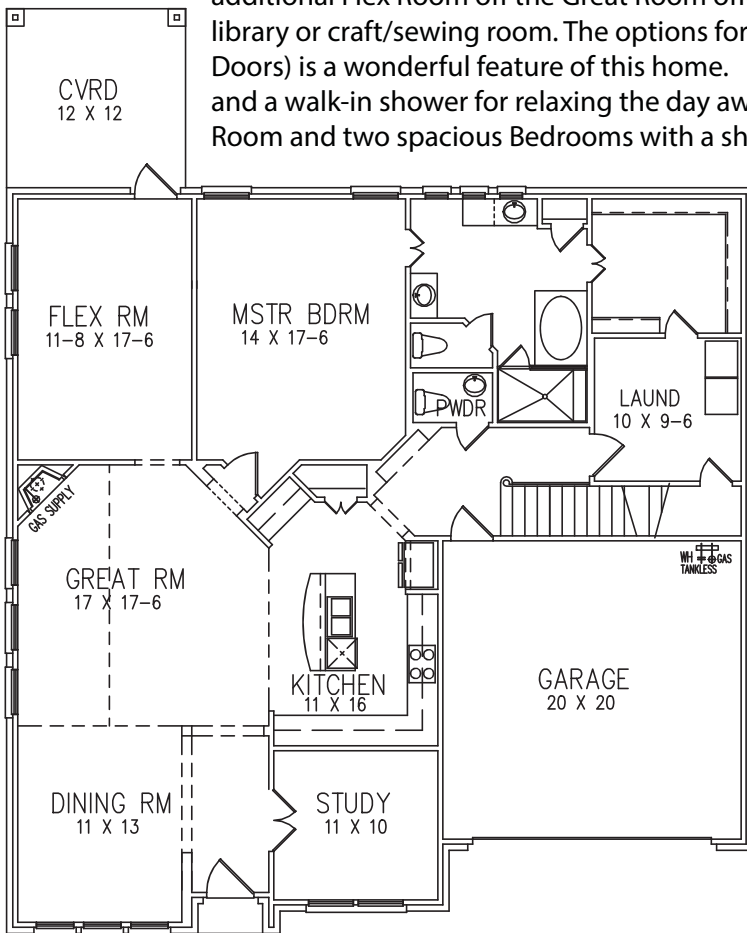
**Custom Providence  
Quick Move-In!**

**\$359,690**  
5716 Eagle Mountain Dr.  
Argyle, Texas  
76226

- 3 / 2.5 / 2**
- 2,927 Sq Ft**
- Flex Room**
- Private Study**
- Covered Patio**
- Stainless Steel Appliances**
- Granite Kitchen Countertops**
- Energy Efficient Water Heater**
- Energy Efficient A/C**
- Radiant Barrier Decking**
- And much more!**



This custom Providence plan in Country Lakes is perfect for your growing family. As you enter the Foyer, it opens to the Dining Room followed by the Great Room and your spacious Kitchen. An additional Flex Room off the Great Room offers an additional play area for the kids, tech room, library or craft/sewing room. The options for this area are countless. A private Study (with French Doors) is a wonderful feature of this home. The luxurious Master Retreat has a large walk-in closet, and a walk-in shower for relaxing the day away. The upstairs is perfect for the kids with a Game Room and two spacious Bedrooms with a shared Full Bath to round out this beautiful home.



For more information, call your Listing Agent  
Shara Hinchey, CENTURY 21 Judge Fite Co., 806.433.3544  
SharaHinchey@judgefite.com

[www.InnovationBuilders.com](http://www.InnovationBuilders.com)

Price refers to the lowest base price and does not include any options that may be shown. Price, floor plans, elevations and features will vary based on location of community. Pricing and plans are subject to change at any time. Actual square footage and dimensions will vary. 03/02/2018

