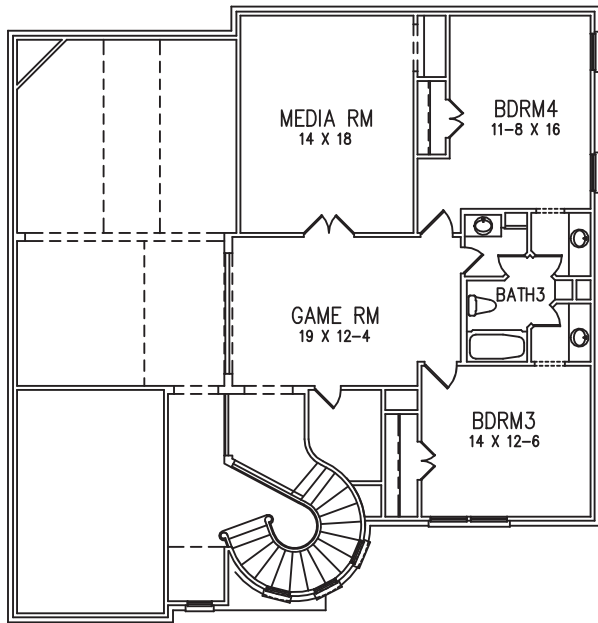
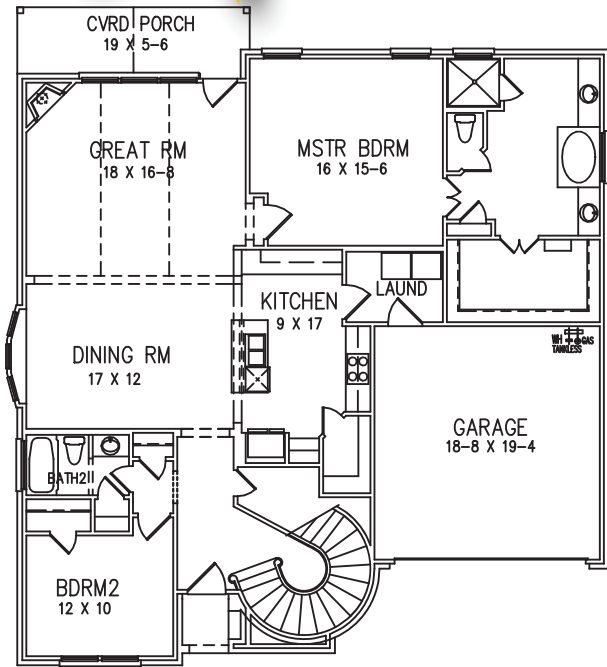


# SOMERSET - PHASE I

**\$417,643**  
2603 Alden  
Mansfield, TX  
76063

**The Franklin  
Quick Move-In!**



This stunning two-story home in our Somerset community is ready for your family to Move-In NOW! As you enter through the front door of this stylish 4 Bedroom home, you are greeted with an open Dining Room, Great Room and Kitchen/Nook. The Master Retreat is spacious and the luxurious Master Bathroom beckons you to relax your cares away! The second Bedroom and Bath are downstairs while Bedrooms 3 and 4, with a shared bath, are upstairs - which also includes a Game Room and Media Room for years of family enjoyment. Optional 3rd Car Garage has been added to this stunning floor plan.

- 4 / 3 / 3**
- 3,128 Sq Ft**
- Gas Fireplace in Great Room with Cast Stone Surround**
- Wood look tile in Entry, Dining Room, Kitchen and Nook Areas**
- Covered Patio**
- 3rd Car Garage**
- Stainless Steel Appliances with Built-In Double Oven**
- Granite Kitchen Countertops**
- Maestro Marble Countertops in Master Bath**
- 16 Seer rated Energy Efficient A/C**
- Energy Efficient Tankless Water Heater**
- And Much More!**



For more information, call your Listing Agent  
Curtis Abernathy, CENTURY 21 Judge Fite Co., 682.999.8191  
CurtisAbernathy@judgefite.com

[www.InnovationBuilders.com](http://www.InnovationBuilders.com)

Price refers to the lowest base price and does not include any options that may be shown. Price, floor plans, elevations and features will vary based on location of community. Pricing and plans are subject to change at any time. Actual square footage and dimensions will vary. 01/07/2020

