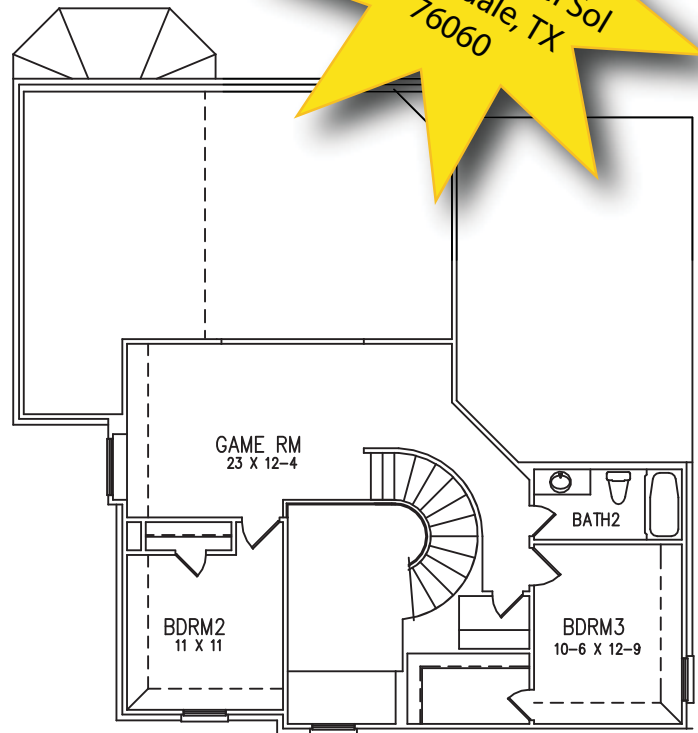
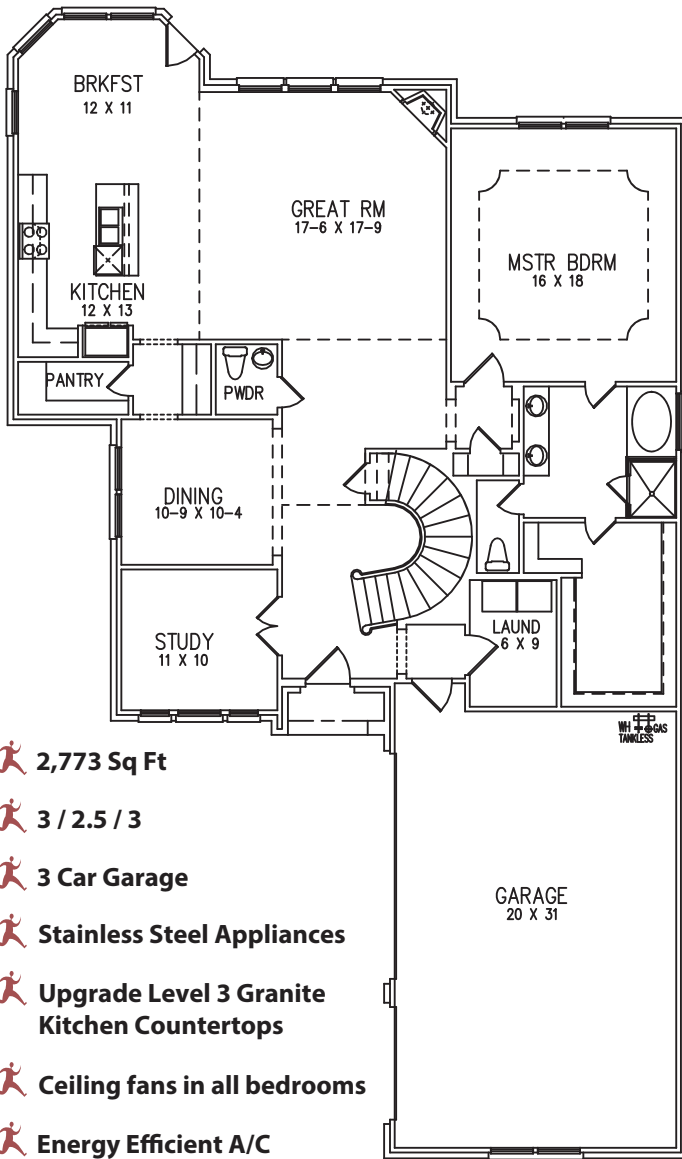










MELIA RANCH

The Merlin
Ready Early 2019!

\$375,187
6925 Costa Del Sol
Kennedale, TX
76060



-  2,773 Sq Ft
-  3 / 2.5 / 3
-  3 Car Garage
-  Stainless Steel Appliances
-  Upgrade Level 3 Granite Kitchen Countertops
-  Ceiling fans in all bedrooms
-  Energy Efficient A/C
-  Energy Efficient Tankless Water Heater
-  And much more!



This popular two-story Melia Ranch floor plan is perfect for your growing family and will be ready for move in early 2019. As you enter the foyer it opens to a private Study, large Dining Room and gorgeous curved staircase. Your family will spend countless hours entertaining family and friends in the open Kitchen and spacious Great Room that includes a corner fireplace. The Master Bedroom is secluded and tucked away for privacy. A spacious Bath with oversized soaking tub and large Walk-In Closet provides a luxurious retreat for the owners of this special home. Spacious Bedrooms 2 and 3 are located upstairs with a full Bath along with a family Game Room.



For more information, call your Listing Agent
Curtis Abernathy, CENTURY 21 Judge Fite Co., 682.999.8191
CurtisAbernathy@judgefite.com

www.InnovationBuilders.com

Price refers to the lowest base price and does not include any options that may be shown. Price, floor plans, elevations and features will vary based on location of community. Pricing and plans are subject to change at any time. Actual square footage and dimensions will vary. 12/14/2018

