

SECLUSION RIDGE

The Sierra
Early Spring 2020 !!

\$526,990
7305 Hidden Way Ct
Arlington, TX
76001

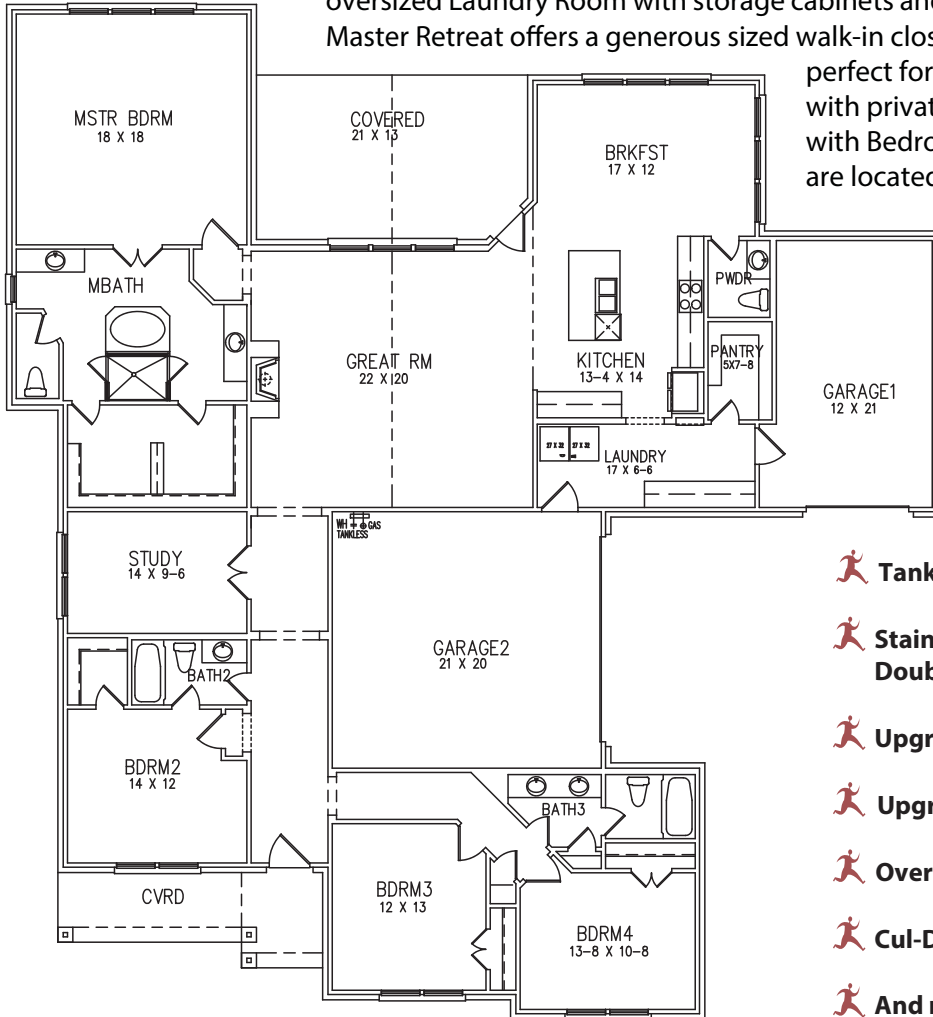






 **3,005 Sq Ft**

 **4 / 3.5 / 3**

This stunning 3,005 square foot 4 Bedroom, 3 ½ Bath home with 3-car Garage will be available for early Spring Move-In!! As you enter through the front doors it leads you to the open Kitchen, Breakfast Area, and spacious Great Room. The oversized covered Patio area off the Great Room is perfect for entertaining. Off the Kitchen you will find the oversized Laundry Room with storage cabinets and a large walk-in Pantry. The luxurious Master Retreat offers a generous sized walk-in closet and oversized walk-in shower

perfect for relaxing the day away. Bedroom 2 with private Bath and Study are off the Foyer with Bedrooms 3 and 4 with a shared full Bath are located off a separate hallway.



-  **Glass Front Door**
-  **Moen Plumbing Fixtures**
-  **Oil Rubbed Bronze fixtures**
-  **Custom Site Finish Cabinets**

-  **Tankless Water Heater**
-  **Stainless Steel Appliances with Double Oven and 36" Cooktop**
-  **Upgraded Kitchen Countertops**
-  **Upgraded Stone elevation design**
-  **Oversized Covered Patio**
-  **Cul-De-Sac Lot**
-  **And much more!**



For more information, call your Listing Agent
Curtis Abernathy, CENTURY 21 Judge Fite Co., 682.999.8191
CurtisAbernathy@judgefite.com

www.InnovationBuilders.com

Price refers to the lowest base price and does not include any options that may be shown. Price, floor plans, elevations and features will vary based on location of community. Pricing and plans are subject to change at any time. Actual square footage and dimensions will vary. 01/07/2020

